

The word "Renov" is written in a bold, green, sans-serif font. To its right is a stylized logo composed of several overlapping triangles in shades of green, blue, and purple, forming a larger, abstract shape.

Renov

The background of the entire page is a stylized map of Europe, divided into four large triangular sections by diagonal lines. The top-left section is light green, the top-right is dark green, the bottom-left is dark blue, and the bottom-right is purple. The map shows the outlines of the continents in a light, semi-transparent color.

**Accelerating
the professionalisation
of worksite managers
and team leaders in the
specific coordination
of renovation worksites**

A project carried out in partnership between
CCCA-BTP (France), FORMEDIL (Italy),
FLC Asturias (Spain), LUKASIEWICZ ITE (Poland)
and PEDMEDE (Greece)

With the support of
the Erasmus+ programme



Erasmus+



What is RenovUp ?

Team management, regulations, safety standards, environmental and climatic objectives and materials, are all factors encouraging **worksite managers and team leaders** working on building renovation worksites **to constantly enhance their professionalism.**

Their training is a major challenge at European level.

Five European players in training for construction trades, supported by the Erasmus+ programme, have teamed up to jointly produce a dedicated solution to address the necessary ramp-up in skills of middle managers in the specific management of building renovation sites in Europe.

This is the objective of the RenovUp project (2020-2023).

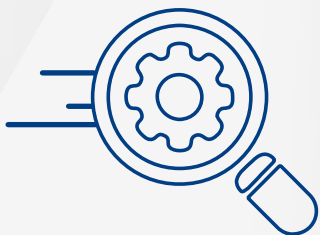


THE EUROPEAN PARTNERSHIP IS COMPOSED OF...

- » **Three national and regional networks** offering vocational training in construction trades: the CCCA-BTP for France, FORMEDIL for Italy and FLC Asturias for Spain.
- » **A technological and educational research network** in Poland, LUKASIEWICZ ITE.
- » **A professional federation** for the Greek construction sector, PEDMEDE.

What results has RenovUp achieved ?

To succeed in increasing the professionalism of worksite managers and team leaders in the building renovation sector, the RenovUp project means:



Taking work situations into account as a starting point in order to respond to companies' practical concerns.

RenovUp has created an inventory of specific professional situations in renovation. It has then transposed them into a reference framework of activities that can be translated into blocks of skills sought-after by companies.

Support for trainers/trainers/ apprenticeship masters in the new training approach in companies and in training centres.

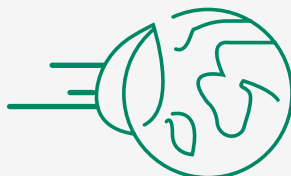
After a period of identifying objectives for increasing the professionalism of methods and then formalising assessment processes, the partners oversaw the establishment of experimental training in each project-partner country.



Recognition of professional experience.

The partnership has worked on the development of a master plan for the recognition of learning outcomes, starting in particular with the implementation of Open Badges.

Systematic integration of environmental and climate objectives, as well as constantly evolving safety standards in the management of worksites and teams on renovation sites.





Erasmus+

Massive awareness is now growing around training and accelerating the professionalisation of worksite managers and team leaders in the specific coordination of building renovation worksites in Europe.

Indeed, middle managers are essential on worksites to enable the construction sector to meet the challenges of tomorrow and the need for effective renovation and sustainable building. Worksite managers and team leaders need to strengthen their ability to approach renovation in its globality.

**RenovUp is a response
from project's European partners.**

For more information about the project and its partners :

www.renovup.org/fr

SEE THE RESULTS FROM THREE YEARS OF THE PROJECT



CONTACT FRANCE

CCCA-BTP, marek.lawinski@ccca-btp.fr

